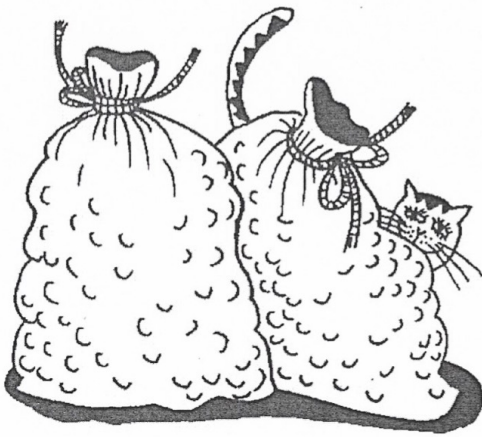


"MÁ MAMĚNKA COSI MÁ"



Musical notation for the first line of the song. The melody is on a treble clef staff in 2/4 time. The notes are: quarter note G4 (circled green), quarter note A4, quarter note B4 (circled blue), quarter note C5 (circled red), quarter note B4, quarter note A4, quarter note G4. The lyrics below are: MÁ MA-MĚN-KA CO-SI MÁ, CO-SI MÁ,

Musical notation for the second line of the song. The melody is on a treble clef staff in 2/4 time. The notes are: quarter note G4 (circled red), quarter note A4, quarter note B4 (circled blue), quarter note C5, quarter note B4, quarter note A4, quarter note G4. The lyrics below are: SCHO-VA-LA TO DO SE-NA, DO SE-NA

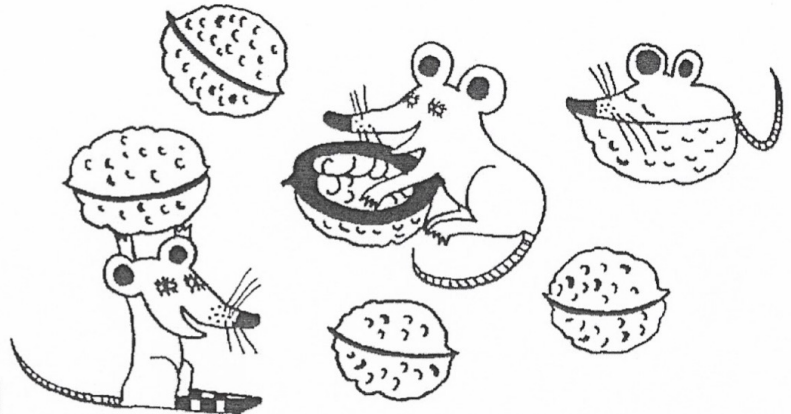
-NAJDEHE V PÍSMŮCE POMLKY? - NE



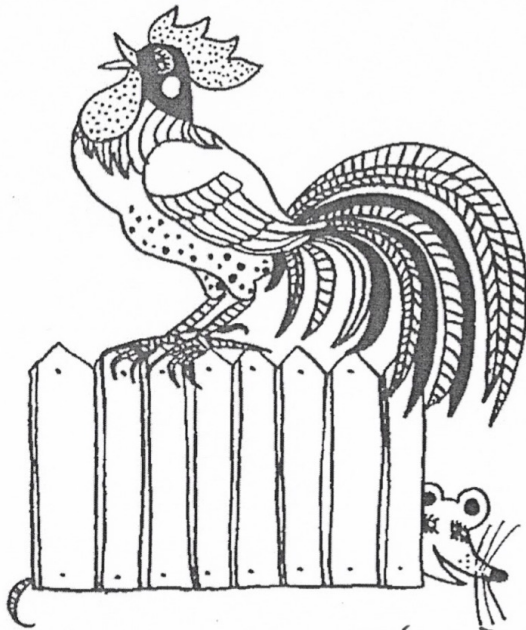
- DOPIS NOTY DLE VZORU

- ZELENĚ ZAKROUŽKUS NOTY c<sup>1</sup>, MODŘE f<sup>1</sup>  
A ČERVENĚ a<sup>1</sup>

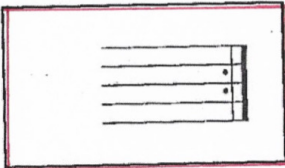
Two musical staves in 2/4 time. The first staff shows a quarter note G4 and a quarter note A4. The second staff shows a quarter note G4, a quarter note A4, a quarter note B4, and a quarter note C5.



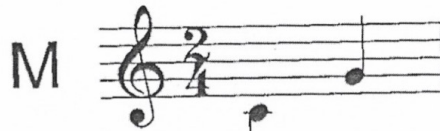
"NÁŠ KOHOUTEK KOKRHÁ"



ZAPAMATUJ SI NOVOU HUDEBNÍ ZNAČKU  
REPETICE - OPAKOVÁNÍ



→ PÍSMĚČKA "NÁŠ KOHOUTEK KOKRHÁ" SE SKLÁDÁ ZE 2  
STEJNÝCH ČÁSTÍ



PÍSMĚČKA BY ŠLA ZAPSAT TAKÉ TAKTO → POMOCÍ  
REPETICE

